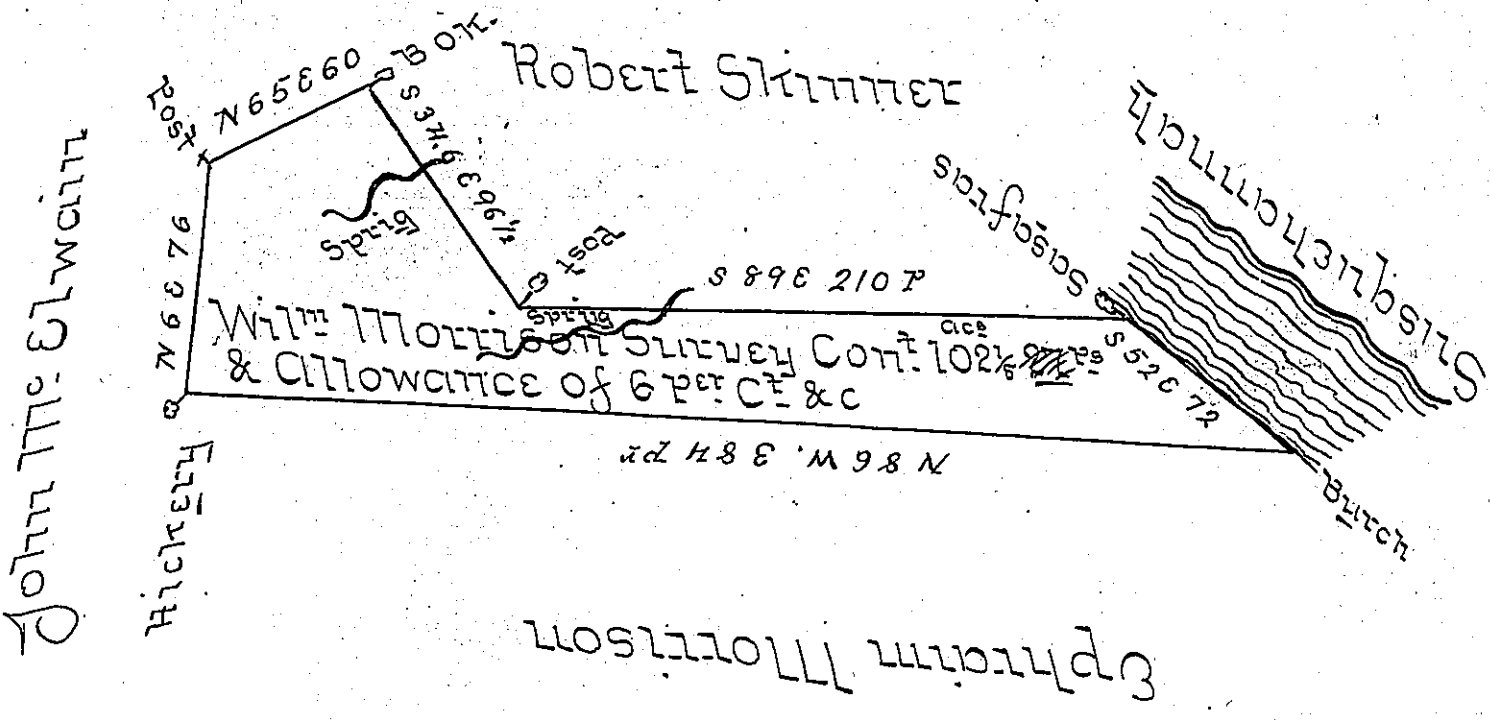


Saml Campbell



A Draught of a Tract of Land Situated on the North side of the West Branch of Susquehanna - About Two Miles and a half Below the Mouth of Pine Creek in the Late Purchase Survey'd for Wilm Morrison on a premotion ^{WE} dated the fifteenth of October 1755 Containing One hundred & Two Acres & 27 perches & Allowance &c &c Dated this 26th ^{Nov} 1755

Saml Edmiston
D. Surveyr

John Lukens Esquire S. J.

IN TESTIMONY that the above is a copy of the original remaining on file in the Department of Internal Affairs of Pennsylvania, made conformably to an Act of Assembly approved the 16th day of February, 1833, I have hereunto set my Hand and caused the Seal of said Department to be affixed at Harrisburg, this twenty ninth day of November 1905.

Leaac P. Perry
Secretary of Internal Affairs.